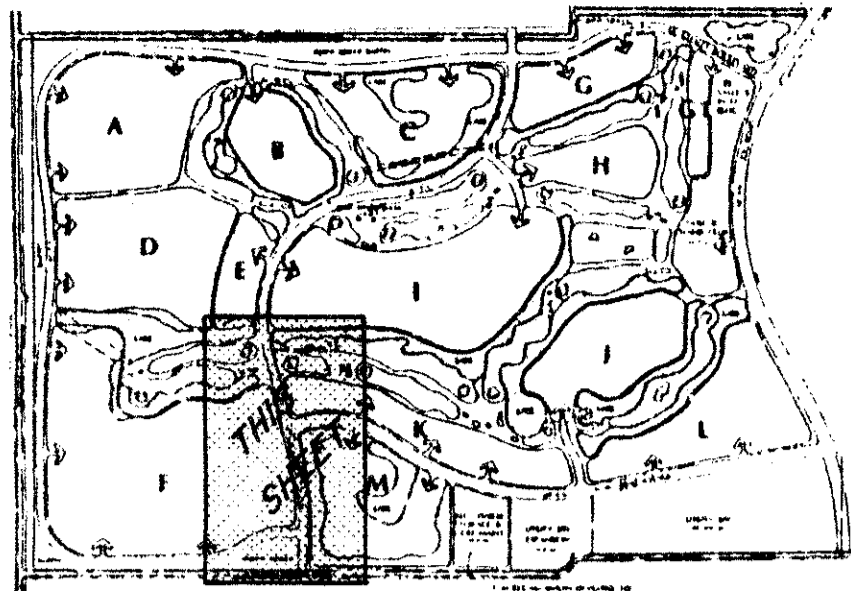


55/19



# ABERDEEN - PLAT NO. 2

## A PORTION OF A (P.U.D.)

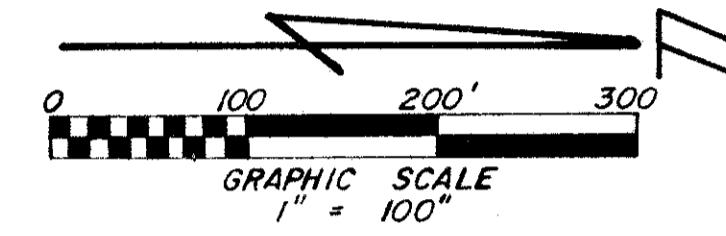
### SECTIONS 15 & 16, TOWNSHIP 45 SOUTH, RANGE 42 EAST

PALM BEACH COUNTY, FLORIDA - AUG, 1986  
BEING A REPLAT OF A PORTION OF BLOCK 47 AND THE SCHOOL TRACT LYING IN SECTION 16, TOWNSHIP 45 SOUTH, RANGE 42 EAST,  
PALM BEACH FARMS CO. PLAT NO. 3, RECORDED IN PLAT BOOK 2, PAGE 49, PUBLIC RECORDS OF PALM BEACH COUNTY, FLORIDA

SEE SHEET NO. 8

19

STATE OF FLORIDA  
COUNTY OF PALM BEACH  
This Plat was filed for record at \_\_\_\_\_ M.  
this \_\_\_\_\_ day of \_\_\_\_\_  
19 \_\_\_\_\_ and duly recorded in Plat Book No. \_\_\_\_\_  
on page \_\_\_\_\_  
JOHN B. DUNKLE, Clerk Circuit Court  
By \_\_\_\_\_, D. C.



KEY MAP

NOT TO SCALE

MATCH LINE

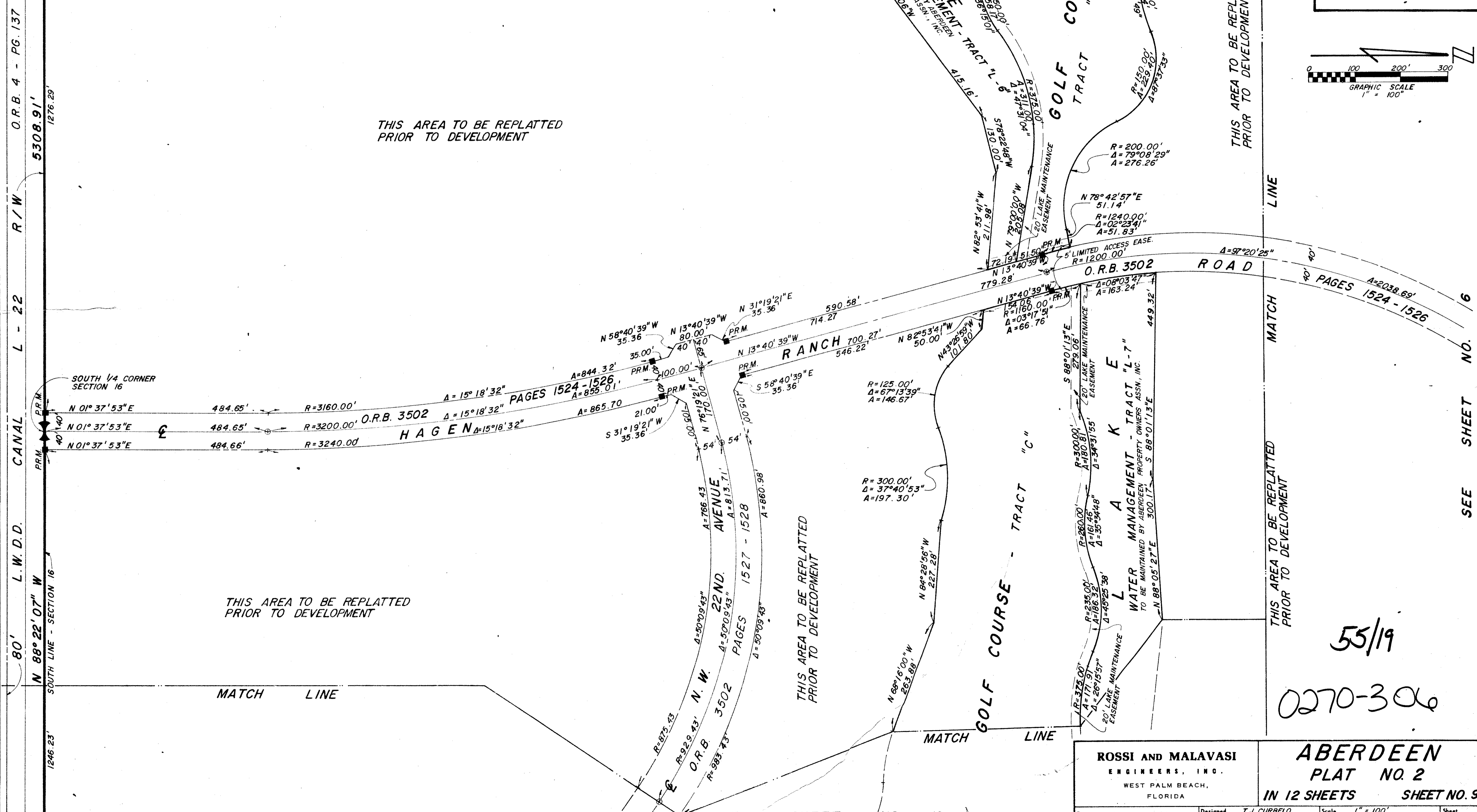
MATCH LINE

THIS AREA TO BE REPLATTED  
PRIOR TO DEVELOPMENT

THIS AREA TO BE REPLATTED  
PRIOR TO DEVELOPMENT

THIS AREA TO BE REPLATTED  
PRIOR TO DEVELOPMENT

THIS AREA TO BE REPLATTED  
PRIOR TO DEVELOPMENT



80' L.W.D.D. CANAL L-22 R/W O.R.B. 4 - PG. 137  
N 88° 22' 07" W SOUTH LINE - SECTION 16  
1246.23'

O.R.B. 3502 ROAD  
A=97°20'25" R=1200.00'  
A=2038.69' R=1524-1526

55/19

0270-306

|   |                        |   |         |
|---|------------------------|---|---------|
| <b>ROSSI AND MALAVASI</b><br>ENGINEERS, INC.<br>WEST PALM BEACH,<br>FLORIDA |                        | <b>ABERDEEN</b><br>PLAT NO. 2<br>IN 12 SHEETS SHEET NO. 9 |         |
| Date AUGUST, 1986   | Designed T. J. CURBELO | Scale 1" = 100'   | Sheet   |
| Approved  | Drawn T. J. CURBELO    | Job No.   | 9 of 12 |
|   | Checked                | File No.  |         |

SEE SHEET NO. 10

SEE SHEET NO. 6

DRAWING NUMBER

DRAWING NUMBER

DRAWING NUMBER

PLAN HOLD CORPORATION • IRVINE, CALIFORNIA  
REORDER BY NUMBER 07349

PLAN HOLD CORPORATION • IRVINE, CALIFORNIA  
REORDER BY NUMBER 07349

PLAN HOLD CORPORATION • IRVINE, CALIFORNIA  
REORDER BY NUMBER 07349

PLAN HOLD CORPORATION • IRVINE, CALIFORNIA  
REORDER BY NUMBER 07349